

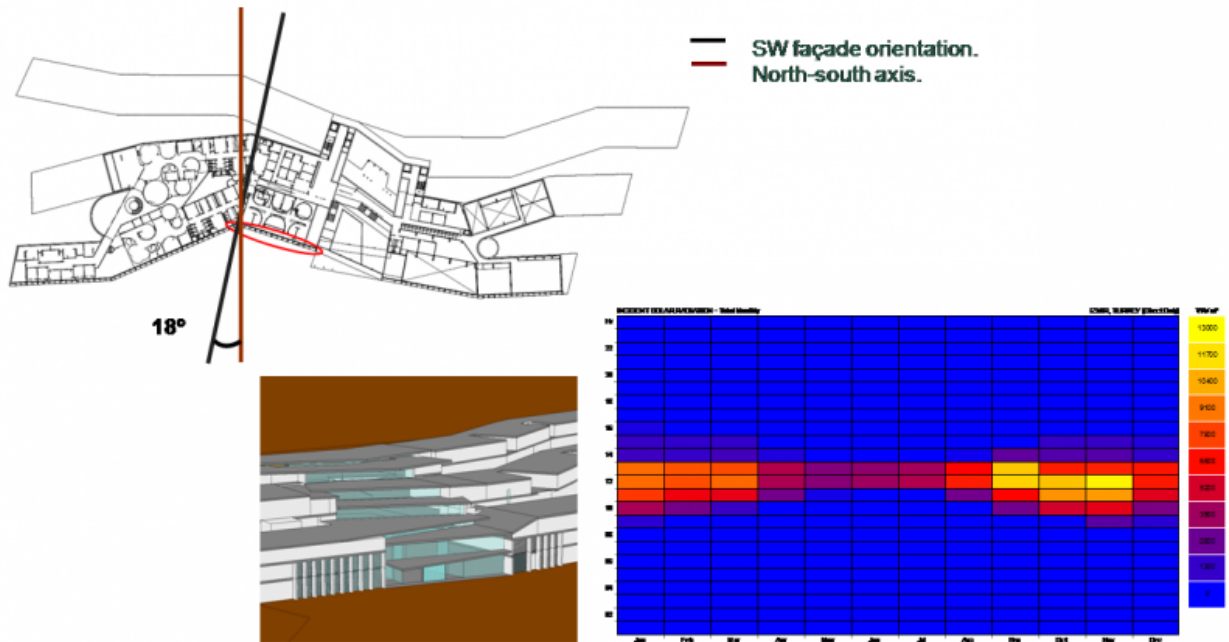


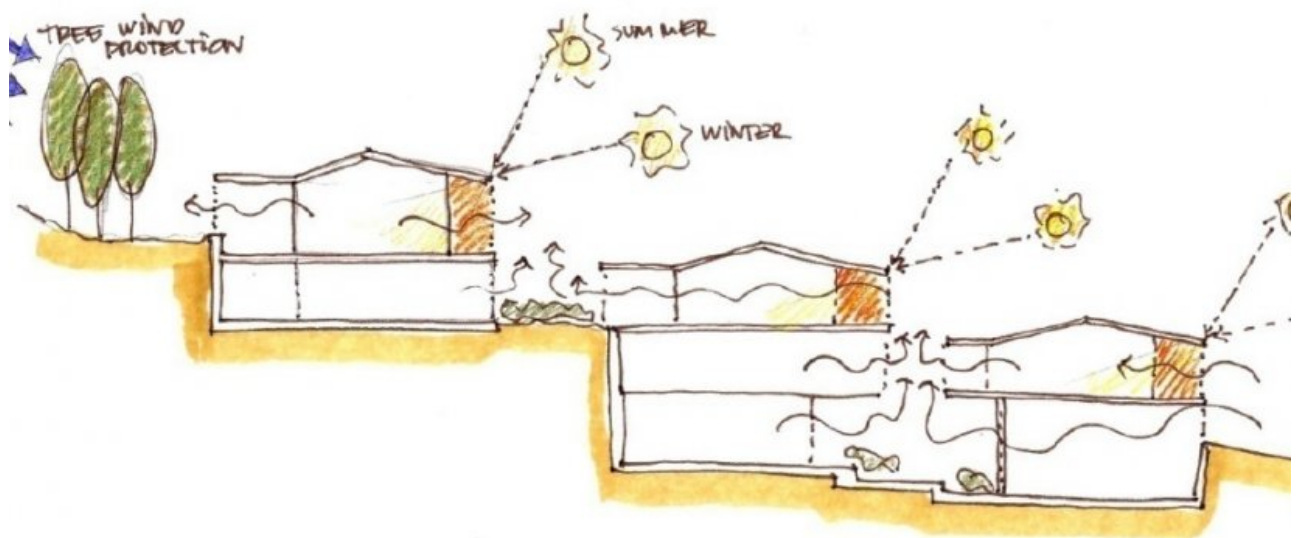
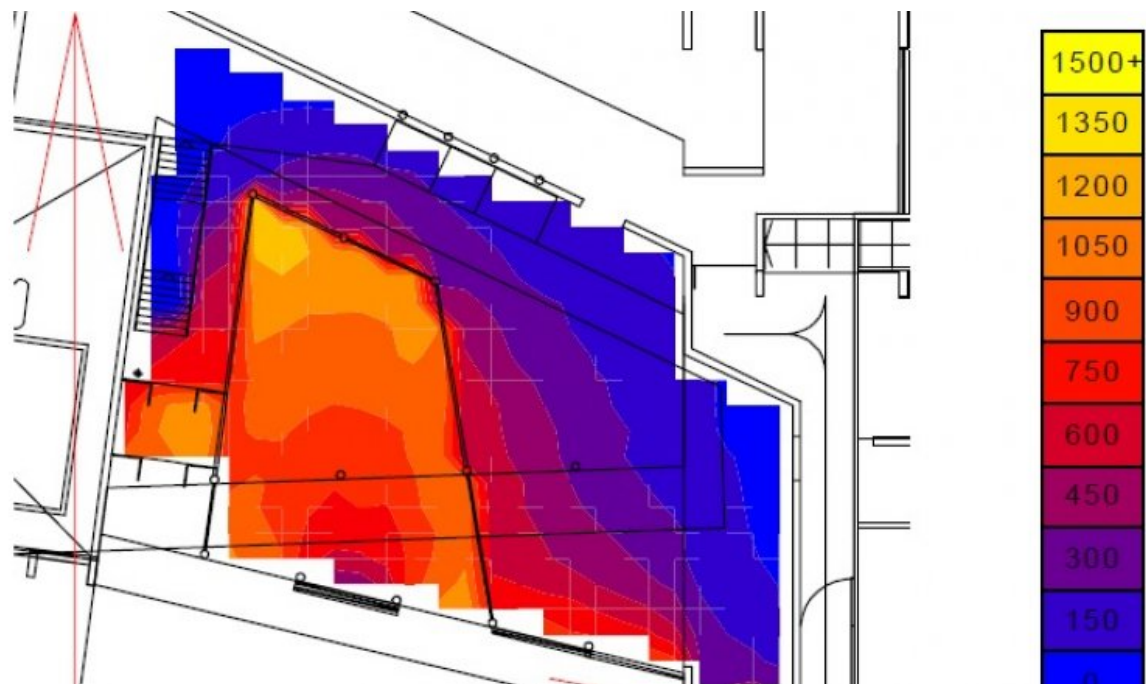
ESTUDI RAMON FOLCH I ASSOCIATS, S.L.

Published on *Estudi Ramon Folch i Associats S.L.* (<https://www.erf.cat>)

Support for sustainability in the design of 35 hectare resort in Turkey

Technical assistance to the OAB architecture team for the sustainability master plan, and schematic and detailed design





*Hotel winds and radiatio
Section and plant*

Category:

[Eficiència energètica](#) [1]

Client

Client privat

Location

Turquia

Period

2012

Motivation

- Residential project of 200 hectares.
- Master plan: 70,000 m² GFA
- First phase: 41,000 m² architectural projects including the Canyon Ranch Hotel with 24,000 m² (70 rooms and 8,000 m² spa centre, 80 bungalows and 53 semi-detached rental residences) and

36 detached residences (villas).

Results

The main output delivered were:

- Analysis of the climate and local conditions.
- Integral water management (rain collecting, treatment and regeneration, desalination)
- Overall energy system (supply, district heating & cooling, renewable and high efficiency systems)
- Other analyses: material selection and waste, mobility, smart efficient technologies, design criteria for gardens and landscape.
- Passive design: analysis of light and shade, natural ventilation.
- Energy efficiency technologies: cooling, lighting and control system.
- Water cycle: collection, efficiency and reuse system.
- Selection of materials to minimise environmental impact.

Categoria

[Eficiencia energètica a edificis nous](#) [2]

Tags

[ERF al món](#) [3]

[Download pdf](#) [4]

Source URL: <https://www.erf.cat/en/projects/support-sustainability-design-35-hectare-resort-turkey>

Links

[1] https://www.erf.cat/en/projectes/?field__mbit_tid=50

[2] <https://www.erf.cat/en/categoria/edificaci%C3%B3-sostenible>

[3] <https://www.erf.cat/en/erf-en-el-mundo>

[4] <https://www.erf.cat/printpdf/226>