

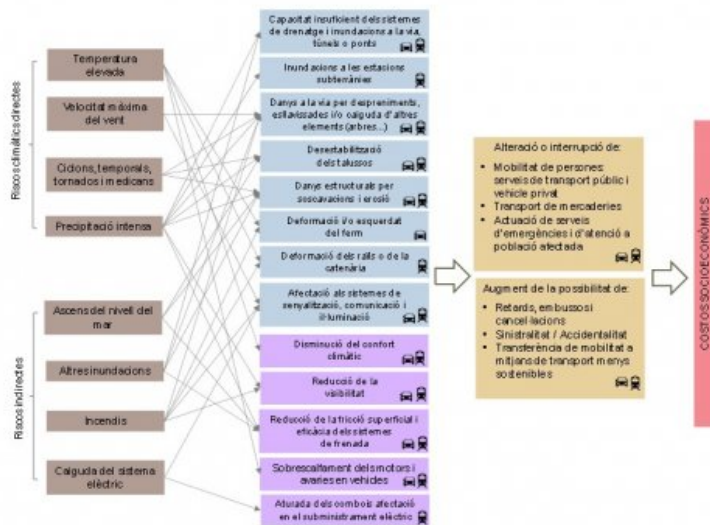
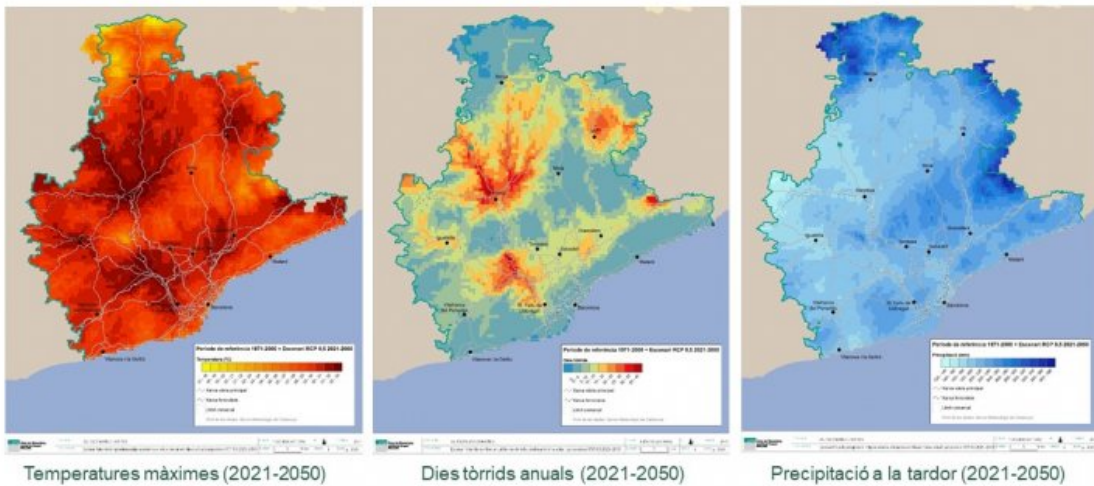


ESTUDI RAMON FOLCH I ASSOCIATS, S.L.

Published on *Estudi Ramon Folch i Associats S.L.* (<https://www.erf.cat>)

Vulnerabilities of mobility infrastructures to the effects of climate change

Escenaris climàtics: escenaris futurs combinant clima actual i variacions projectades



Category:

[Consultoria ambiental i territorial](#) [1]

Client

Autoritat del Transport Metropolità (ATM)

Location

Comarques de la demarcació de Barcelona

Period

2019 -2020

Categoria

[Canvi climàtic](#) [2]

Tags

[Publicació](#) [3] [Mobilitat sostenible](#) [4]

[Download pdf](#) [5]

Source URL: <https://www.erf.cat/en/projects/vulnerabilities-mobility-infrastructures-effects-climate-change>

Links

[1] https://www.erf.cat/en/projectes/?field__mbit_tid=52

[2] <https://www.erf.cat/en/categoria/canvi-clim%C3%A0tic>

[3] <https://www.erf.cat/en/tags-projecte/publicacio>

[4] <https://www.erf.cat/en/tags-projecte/mobilitat-sostenible>

[5] <https://www.erf.cat/printpdf/637>